



FOCUSING UPSTREAM

We make a healthy difference in communities by advancing health equity and improving conditions where people live, learn, work and play.

We are a 501(c)(3), private nonoperating foundation with assets dedicated exclusively to improving health in Minnesota. We support work in communities that are experiencing barriers to achieving optimal health, and we partner with organizations that are meaningfully engaged with the people they serve.

OUR FOCUS

Our focus for 2019–2022 is on three key social determinants of health where we have strong partners, momentum and history. These include **Healthy Start**, centering on quality early education; **Healthy Connections**, supporting safe, welcoming and connected communities; and **Access to Coverage**, aiming to expand enrollment in public insurance programs.

In 2020 we also expanded our focus to respond to community needs amid the COVID-19 pandemic through rapid response grants, contributions to collaborative philanthropic funds and support for local anti-racism efforts.

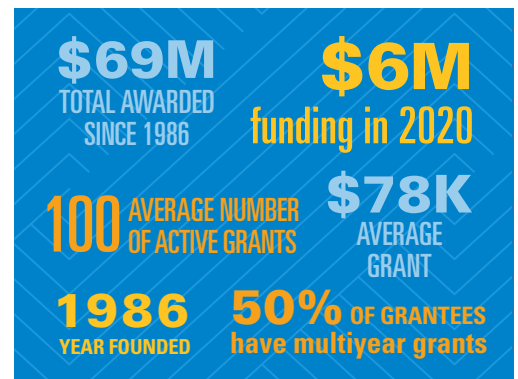
OUR STRATEGIES

Strategic grantmaking. Invest in lasting systems change and respond to emerging opportunities through a portfolio of competitive and invited grants.

Comprehensive approach. Support grantee success and advance the field through evaluation, communications, influence and capacity building.

Strong community connections. Enrich board and staff connections to the Foundation mission and the communities we serve — with an ongoing and deepened commitment to racial and health equity.

Operational excellence. Nurture a mission-driven culture that excels at fostering relationships, strategic implementation, continuous improvement and financial stewardship.



FOUNDATION BOARD OF DIRECTORS

Maria Regan Gonzalez | Mayor of Richfield; Principal Sustainability Design Consultant, Blue Cross and Blue Shield of Minnesota

Dr. Rachel Hardeman | Associate Professor and Blue Cross Endowed Professor of Health and Racial Equity, University of Minnesota School of Public Health

Bukata Hayes | Vice President, Racial and Health Equity, Blue Cross and Blue Shield of Minnesota

Pamela J. Moret, JD | President and CEO, brightpeak financial, and SVP, Thrivent Financial (retired)

John Orner | Vice President, Treasurer and Chief Investment Officer, Blue Cross and Blue Shield of Minnesota

Nash Shaikh | Chief of Staff to the CEO, Blue Cross and Blue Shield of Minnesota

Dr. Mark Steffen | Vice President and Chief Medical Officer, Blue Cross and Blue Shield of Minnesota

Nancy Vyskocil | President and CEO, Northwest Minnesota Foundation (retired)

FOR MORE INFORMATION Email foundation@bluecrossmnfoundation.org or visit bluecrossmnfoundation.org

Photo courtesy of Little Earth of United Tribes

Blue Cross® and Blue Shield® of Minnesota Foundation is a nonprofit independent licensee of the Blue Cross and Blue Shield Association.